

IBUKI LED Navigation Light

NAUTILIGHT NAVI NLS series



MASTHEAD
NLSM-2W



PORT
NLSL-2R



STBD
NLSR-2G



STERN
NLSS-2W



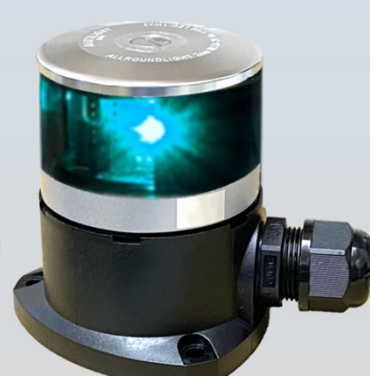
ALL ROUND WHITE
NLSA-2W



ALL ROUND RED
NLSA-2R



TOWING
NLST-2Y



ALL ROUND GREEN
NLSA-2G

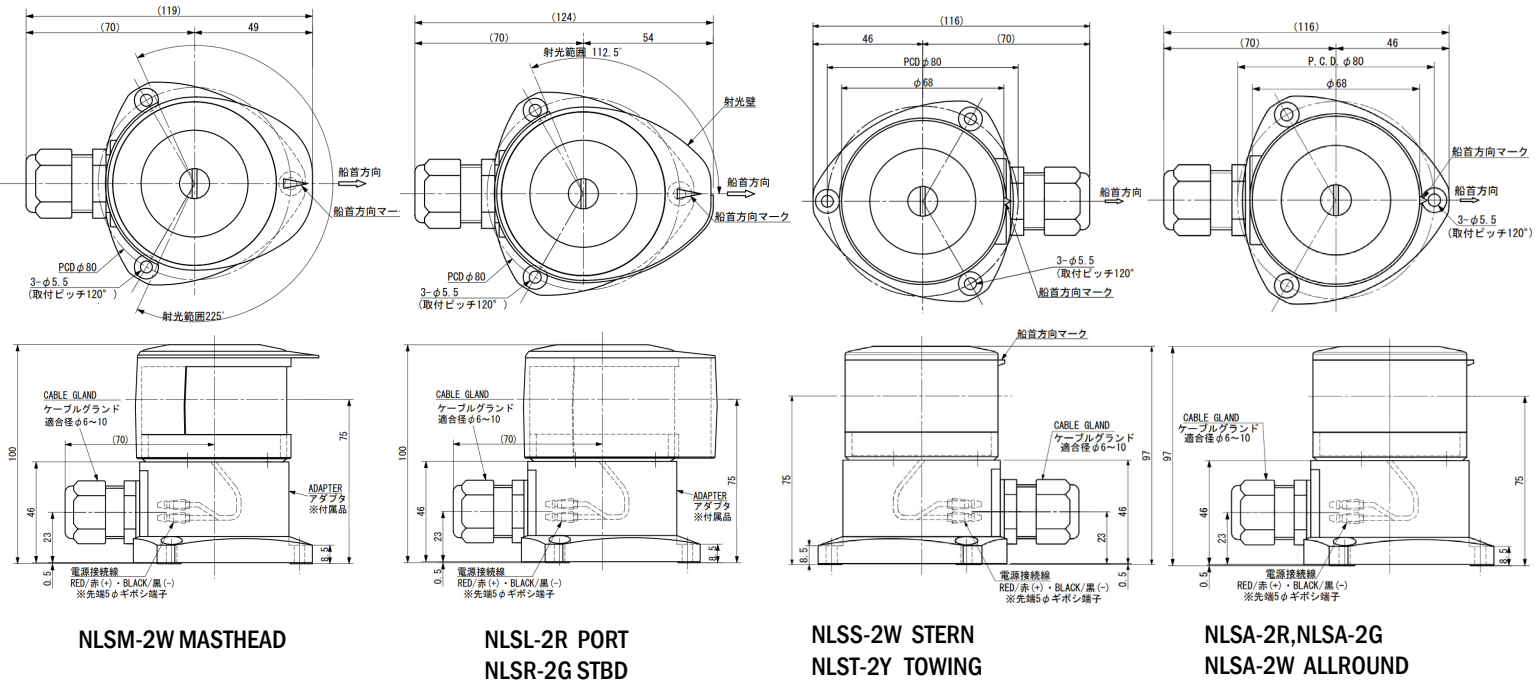
For the ship length LOA 20-50m

The IBUKI NAUTILIGHT NAVI NLS series represents the next generation of navigation lighting for maritime safety.

All components have been redesigned to accelerate the development of a state-of-the-art LED navigation light with a simple function.

The optional light controller and failure detection relay provide additional safety features to ensure optimal operation.

The IBUKI navigation light will bring a new concept to ship design.

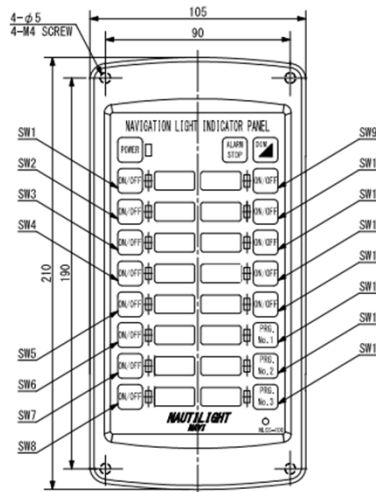


Model	Type	NM	Light color	Angle	Intended for
NLSM-2W	MASTHEAD	5	WHITE	225	Ship length overall 20-50m
NLSL-2R	PORT	2	RED	112.5	
NLSR-2G	STBD	2	GREEN	112.5	
NLSS-2W	STERN	2	WHITE	135	Ship length overall below 50m
NLSA-2W	ALLROUND	2	WHITE	360	
NLSA-2R	ALLROUND	2	RED	360	
NLST-2Y	TOWING	2	YELLOW	135	
NLSA-2G	ALLROUND	2	GREEN	360	

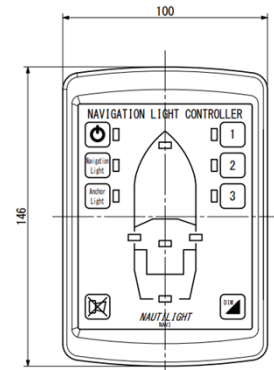
Navigation light controller

NLCS Navigation light controller is the purpose of light control and failure detection under the certain status on navigation light. Power supply is DC24V and system is incorporated with IBUKI NLS series LED navigation light. NLCS-100 is independent control of navigation light, NLCS-300 is integrated control of navigation light.

NLCS-100



NLCS-300





Stern light
NLSS-2W



All round Red
NLSA-2R



All round white
NLSA-2W



All round green
NLSA-2G



Towing
NLST-2Y

NAUTILIGHT

NAVI



Masthead
NLSM-3W



PORT
NLSG-2R



Bi
NLSW-2B



STBD
NLSG-2G

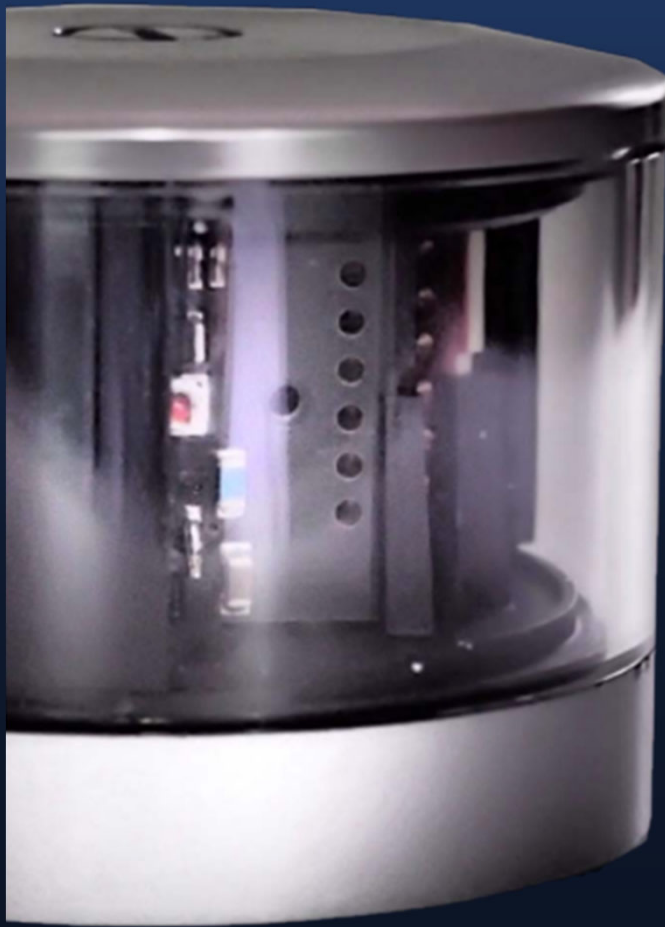
IBUKI Nautilight NAVI LED navigation light NLS series



GOOD DESIGN
AWARD 2013

Voltage	DC10V~DC30V
Power consumption	Max 4.5W (Side light:2W/All round white,masthead:4.5W/All round red,Bi,stern:3W)
LED lifetime	60000hrs
IP	IP56
Dimension	Φ68 H56 (Mounting 3-φ5.5 PCD Φ50)
Kg	0.2
Approval standard	HK&JCI(Japanese government approval)

Technology of NAUTILIGHT NAVI



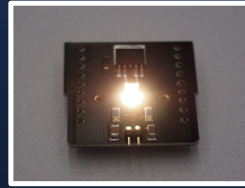
High-strength aluminum plate

The heat dissipation plate is made of high-strength aluminum which specially treated to efficiently dissipate the heat generated by LEDs.



Fine shading

All components are precisely positioned to achieve perfect light shielding in line with the unique design concept.



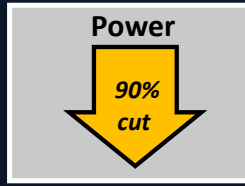
DC10-30V Wide power input

LED units are compatible with wide range power input. Built-in stabilizing circuit stands for voltage fluctuations.



Weather and impact proof

The housing is made of solid polycarbonate which is superior in weather and impact resistance.



Power saving

Significant power savings (up to 90%)*



High-end design and quality

All components are newly designed which is manufactured in Japan. Housing is miniaturized to the utmost limit yet with fine quality and design.

*Rates are varied depend on the model.

No.	Model	Type	NM	Color	Angle	Ship LOA
S1	NLSM-3W	Masthead	3	White	225	Less than 20m
S2	NLSG-2R	Port	2	Red	112.5	
S3	NLSG-2G	STBD	2	Green	112.5	
S4	NLSW-2B	Bi	1	Red/Green	112.5	Less than 12m
S5	NLSS-2W	Stern	2	White	135	Less than 50m
S6	NLSA-2W	All round white	2	White	360	
S7	NLSA-2R	All round red	2	Red	360	
S8	NLST-2Y	Towing	2	Yellow	135	
S9	NLSA-2G	All round green	2	Green	360	